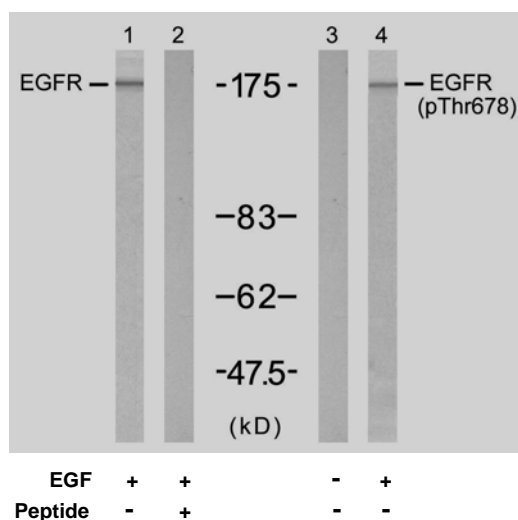




11 Park Drive, Suite 12  
Boston, MA 02215

## Rabbit anti EGFR (Ab-678)

- Catalog Number:** AP21193  
**Amount:** 100µl (for 10 Western Blotting)  
**Swiss-Prot No. :** P00533  
**Form of Antibody:** Rabbit IgG in phosphate buffered saline (without  $Mg^{2+}$  and  $Ca^{2+}$ ), pH 7.4, 150mM NaCl, 0.02% sodium azide and 50% glycerol.  
**Storage/Stability:** Store at -20°C/1 year  
**Immunogen:** The antiserum was produced against synthesized non-phosphopeptide derived from human EGFR around the phosphorylation site of threonine 678 (K-R-T<sup>P</sup>-L-R).  
**Purification:** The antibody was affinity-purified from rabbit antiserum by affinity-chromatography using epitope-specific immunogen.  
**Specificity/Sensitivity:** EGFR (Ab-678) antibody detects endogenous levels of total EGFR protein.  
**Reactivity:** Human, Mouse, Rat  
**Applications:** WB: 1:1000  
**References:** Doherty JK, et al. (1999) Proc Natl Acad Sci U S A; 96(19): 10869-10874  
Wu TT, et al. (1998) Mol Biol Cell; 9(7): 1661-1674  
O'Rourke DM, et al. (1997) Proc Natl Acad Sci U S A; 94(7): 3250-3255  
Noguchi T, et al. (1994) Mol Cell Biol; 14(10): 6674-6682  
Kanner SB, et al. (1991) Mol Cell Biol; 11(2): 713-720



Western blot analysis of extracts from A431 cells untreated or treated with EGF (200ng/ml, 5min), using EGFR (Ab-678) antibody (AP21193, Line 1 and 2) and EGFR (phospho-Thr678) antibody (pAP11186, Line 3 and 4).

**For Research Use Only**

Contact & Ordering Information: Angio-Proteomie, 11 Park Drive, Suite 12, Boston, MA 02215, USA. Fax: (480) 247-4337, [angioproteomie@gmail.com](mailto:angioproteomie@gmail.com)